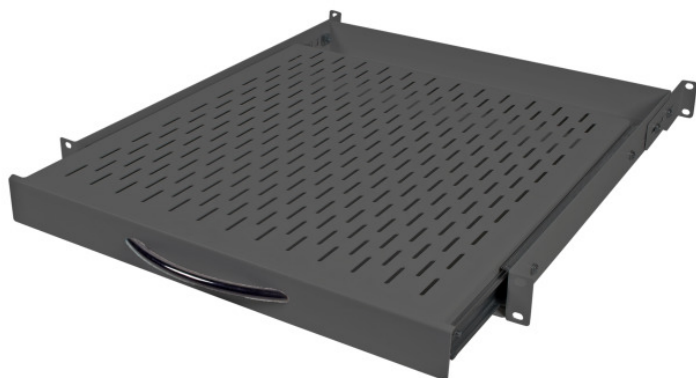


DATASHEET

19" 1U Pull-Out Shelf, Depth-Adj., Depth 350 mm, Cab. Depth 600, RAL9005



Description

For mounting in all network and server cabinets
 Usable width 440 mm
 Dimension depth = depth of tray
 Mounting at the rear-sided profiles necessary
 Material: steel sheet, paint finish RAL9005, jet black

General data

Model	Shelf
Material	metal
Max. load	35 kg
Weight	3.5 kg

Available variants

Article no.	Title	Width	Height	Depth	Max. Pull-Out	Cabinet Depth	Colour	RAL-number
691651TS.6	19" 1U Pull-Out Shelf, Depth-Adj., D=350 mm, Cab. Depth 600, RAL9005	440 mm	44.45 mm	350 mm	200 mm	600 mm	Black	9005

This datasheet was created automatically on 17-10-2019 . Technical changes reserved.

